

Safe sport and
playground edges



ACO SPORT

Safety Edge Introduction





The Softer Side of ACO Sport

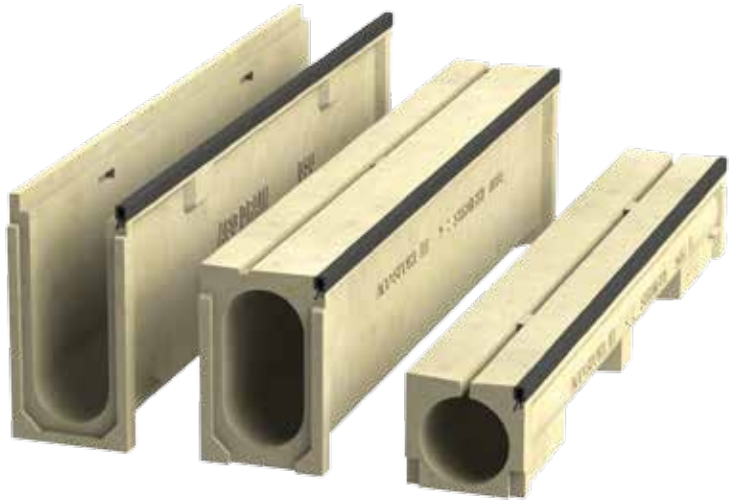
Minimize track injuries with Safety Edge

ACO is the only sport drainage manufacturer with the technology to cast cellular rubber integrally into its polymer concrete units.

This technology is used to create products complete with safety edges, suitable for athletes in competitive sports and children in play areas. These safety edges provide a compressible edge that minimizes impact injuries and is unlikely to cut or abrade skin. These edges are a crucial requirement around long jump pits, children's play areas and running tracks and fields. The need to provide a soft edge alongside synthetic turf is also a key factor.

Polymer concrete is commonly used for running track drainage and provides the water catchment threshold between running tracks and in-field areas. The edge of the drain next to the synthetic or natural grass can be a sharp, hard edge for players to fall on. As the drainage channels are integrally built into the running track surface, the soft edge is only required on the grass side.

All ACO Sport drainage systems are available with an integrally cast-in rubber safety edge. Border curbs are also available with a similar integrally cast-in rubber safety cap.



ACO Sport System 2000, System 3000 and System 4000 trench drains with safety edge detail.

"ACO Sport has always been our primary surface drainage system of choice when specifying track and field design projects. By incorporating an integrated black safety edge on the field side of the drain channel where infill material compacts over time, ACO has addressed a known athletic field construction safety issue for the athletes through a product design that is both highly functional and aesthetically pleasing."

- Ed O'Hara, Vice President of CHA Sports

Minimizing the Risk

Eliminating all risk of injury is obviously impossible, but there are a number of policies and procedures that can go a long way to minimizing the risk and severity of injuries that do occur.



1. Choose the right product for the activity

The right surface will minimize the occurrence and severity of impact injuries.

2. Choose the right installer

Product will not perform as designed if incorrectly installed.

3. Follow the required maintenance schedule

This will not only maximize the service life of equipment and surfaces, but will alert personnel of any required repairs in a timely manner.

4. Common sense

Visual inspections prior to practice and track events to identify trip or other hazards as well as training and supervision of athletes and children can help prevent accidents before they happen.

Choosing the Right Product

Funds are often invested into the track or field surface but the transition between surface types is a key area where trip and impact injuries occur. It is often an area where a curb or trench drain is used and hard or sharp edges can be present.

Similarly, playgrounds are often required to provide impact resistant surfaces around play equipment, but concrete or other hard curbs are often used to contain loose surfaces which create a trip and impact hazard.

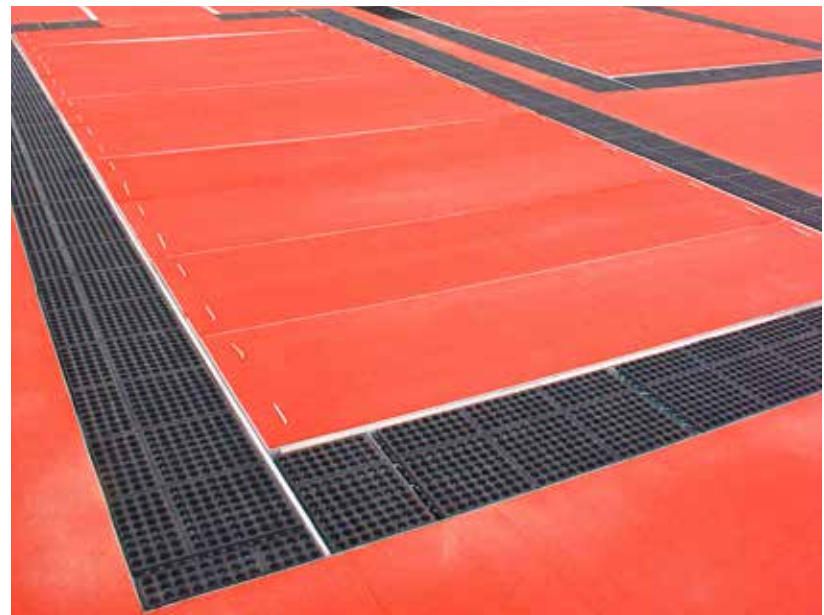
ACO Sport offers a number of safety edge products to soften those transition areas. Channels and curbs that offer an integral, cellular rubber cap are proven to minimize the risk and severity of impact injuries.



ACO Sport System 7000 safety curbs with cellular rubber capping for jump pits, borders and playgrounds.



Safety edge channel used to soften the transition from turf to track.



Safety curb edging around the jump pits provide soft edges to the jump pit once covers are removed.



The rate of playground-related injuries at North Carolina childcare centers dropped 22% after a law passed requiring new playground equipment and surfacing in childcare facilities to conform to CPSC guidelines (source: Safe Kids USA).



ACO Sport products

- **System 2000**
The premier slotted running track drain system used on IAAF tracks.
- **System 3000**
The economical, general purpose running track slot drain system used by colleges and schools.
- **System 4000**
An open channel drain with removable grates. Ideal for tennis courts and general sportsfield use.
- **System 7000**
Rubber capped safety curbs and sand traps to fit around jump pits and playgrounds.
- **System 8000**
A series of accessories for water jump, pole vault and throwing disciplines.
- **System 9000**
A simple polymer concrete stadium terracing and seating system for college and school facilities.

ACO Polymer Products, Inc.

West Sales Office
825 W. Beechcraft St.
Casa Grande, AZ 85122
Tel: (520) 421-9988
Toll Free: (888) 490-9552
Fax: (520) 421-9899

Northeast Sales Office
9470 Pinecone Drive
Mentor, OH 44060
Tel: (440) 639-7230
Toll free: (800) 543-4764
Fax: (440) 639-7235

Southeast Sales Office
4211 Pleasant Road
Fort Mill, SC 29708
Toll free: (800) 543-4764
Fax: (803) 802-1063

Electronic Contact:
info@acousa.com
www.acosport.us



Follow us on



© June 2015 ACO Polymer Products, Inc.

All reasonable care has been taken in compiling the information in this document. All recommendations and suggestions on the use of ACO products are made without guarantee since the conditions of use are beyond the control of the Company. It is the customer's responsibility to ensure that each product is fit for its intended purpose and that the actual conditions of use are suitable. ACO Polymer Products, Inc. reserves the right to change products and specifications without notice.

Re-order Part # AS041